

Shawnee General Store



Since 1859



THE PEOPLE AND TIMES

Since early 2024

In early 2024, the Shawnee General Store was reopened by best friends Kelly Sebring and Tara Molina, on the cover. Their menfolk, Daniel and Pete play significant roles behind the scenes.



Daniel, Kelly, Pete, Tara

The store has renewed energy as the focal point of Shawnee for visitors and locals alike. Some call it the center of the universe. Friendly atmosphere, good food, critical groceries, camping and fishing supplies and various gift items encourage browsing. Upstairs short-term lodging is available in a large 3 bed suite and a 2 bedroom unit. A wine shop has also returned.



1999 - 2023

From 1999 to 2023 Theresa Rooth ran the store with help from Bill (and the kids?) The historic charm was enhanced in many ways including memorabilia, historically consistent repairs and upgrades, and naming sandwiches after local notables. Two small Airbnb units were started in a renovated upstairs.

Covid produced major challenges and made scheduling uncertain. Significant outdoor seating was added and backyard activities were introduced.



They sometimes stored supplies in the building across the street.

For a while they parked and decorated an old family Dodge truck there, which generated much interest.



1990 - 1999



Susie and Tod Wycoff opened the store in 1990. They had worked together in several successful businesses before, and Susie was raised diagonally across the street. They changed the name from “Shawnee Village Store” to “Shawnee General Store” and enclosed an outside porch for the deli. Sporting goods were added to the classic country store inventory. Friendly atmosphere, long hours, home cooking, and care for the community highlighted their days.

Susie’s mother, Charlotte Sittig ran the “Shawna Shop” across the street, and stored some antiques there. The family was widely known for high-end antiques.

Susie and Tod pose with Theresa Rooth, near the time that Theresa began to run the store.



1985 – 1990

The store was mostly closed for these years as the owner Hilda Hope, considered refurbishment and alternate uses for the building. The Hope's had also owned the Shawnee Inn and developed timeshares and Shawnee Mountain.

In 1985 the store closed, the post office had to relocate to a small building near the Shawnee Inn, and upstairs tenants were evicted.

15

The Pocono Record, The Stroudsburg, Pa. — Mon., Dec. 23, 1985

Local

Memories can't replace closed village store

By PATRICIA DIACONT
Pocono Record Writer

SHAWNEE-ON-DELAWARE — The 131-year-old Shawnee General Store was a place where you could pick up a quart of milk, get a great homemade chicken sandwich or just find out the local gossip.

But the little store — whose quiet country village ambience attracted both longtime residents and tourists — is no more.

But although the store is closed, it is not forgotten.

Area residents, expressing sorrow and bewilderment over the closing, said the store was such an integral part of life at Shawnee and they would like to see it re-opened.

Bill Bibbins, a longtime resident of the village, said the store served as a gathering place for many residents during hot summer days and bone-chilling winter evenings.

"I always enjoyed going there because there was a certain sense of comraderie," said Bibbins, whose first came to Shawnee in the 1930's.

"It was a place where you

could find out what events were going to be taking place within the community," he added.

Bibbins said that although the look of the building changed over the years, the traditional charm of the little store was never altered.

"From what I've heard, the people here are very sorry to see it go."

Hilda Hope, the owner of the building, had evicted the tenants of the store, the post office and a small second-floor apartment in order to make extensive repairs. Hope said the work could not be done on the building while it was occupied.

While the postmaster had found a temporary home for the post office at Shawnee Inn, the store's proprietors where not as fortunate. Betty Holland said she has no plans for locating the store's inventory elsewhere.

Charlotte Sittig and John McGreevy said they were surprised to hear that the store was going to close.

Sittig, who lives at the pre-Revolutionary War home at the corner of River and Hollow roads, said she used the store frequently, especially when unexpected guests arrived.

Few residents, she added, knew the store was closing 'until they heard it from neighbors or read about it in The Pocono Record.

Sittig said the store, with its classic oak floors and low ceilings, has great potential for being converted to look as it did at the turn of the century.

Although it's now closed, Sittig said she hopes the building will again serve as the home for a store and post office.

"I have positive thoughts, not negative ones. I think that it will be restored because Mrs. Hope is a nice and intelligent lady."

Also hurt by the closing of the store will be tourists, said McGreevy.

For the many timeshare and one-day vacationers, the closing of the store will mean trying to find another place to pick up food staples and other odd and ends, McGreevy said.

And that could be an inconvenience for someone who is not familiar with the area.

"I would very much like to see another store go in there," McGreevy added.

"I was a very successful enterprise."



Paul Chiland/The Pocono Record

Youths wait for a ride outside the vacant Shawnee Village Store in Shawnee-On-Delaware

c1986 - c1987

Dixie Wilson opened the store for less than a year. This was well before the Wyckoff's permanently opened it in 1990, but maybe a year after landlord Hilda Hope had evicted the previous people in 1985. Dixie is a daughter of Fred Waring, the famous bandleader and onetime owner of the Shawnee Inn.

1975 – 1985

Bette Holland and business partner Lynn Weichel ran the Shawnee Village Store since c1976. Bette's sister-in-law Joy Primrose was her partner at first, in 1975. It had previously only been dry goods, and they began the deli, with great success. Karl Hope, who then owned the Shawnee Inn, was their landlord. The store was the focal point of the village as everybody came by regularly, if only to get their mail.

Bette and husband Bob still live in Shawnee and are active in skiing, community affairs and preserving the village charm.



Bette Holland and Lynn Weichel

1969 – 1975

Wes Hardy was the manager of the Shawnee Village Store for owners Fred Waring and Karl Hope. The family lived in the attached house and the kids helped in the store. He was also Commissioner of Weights and Measures in the county and a volunteer firefighter in Shawnee.

Art Mosteller was postmaster within the store building.



1957 – 1969

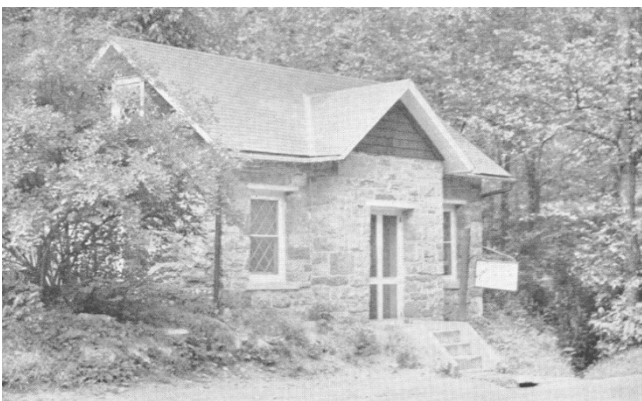
Coleen and Arthur Mosteller bought the building from Ross Worthington. Coleen ran “Mostellers Store”. The family lived in the house attached to the store. Art was the postmaster in the small stone building across the street and later moved the Post Office into the store building, about where the deli counter is now. There was no dining room, or even a deck near the creek.

Several local children worked in the store doing numerous chores and delivering groceries to a few homes in the village.



Art, Coleen and daughter Mary during a Historical Celebration

Daughter Mary Horn still lives in the village, and has a wealth of knowledge.



The old Post Office building across the street, where Art Mosteller was postmaster before moving it into the store. This building was originally a water powered electric generating station, after a grist mill was demolished.

c1903 – 1957

Arthur and Emily Smith operated the store which was owned by the Worthington's. In their day they added gas pumps and a hand cranked kerosene pump. Little is documented about the store in this era.

The Worthingtons owned thousands of acres on both sides of the river and built the Shawnee Inn, the Shawnee Playhouse, and many other buildings.



The store during
this era

C.C. Worthington

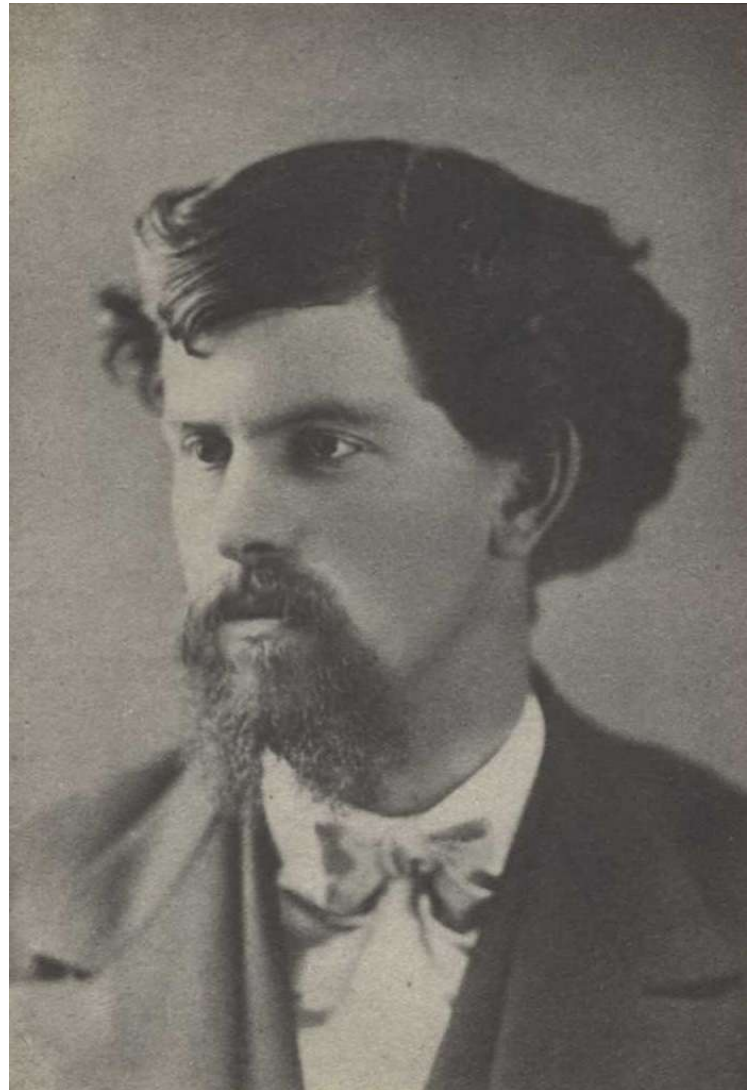
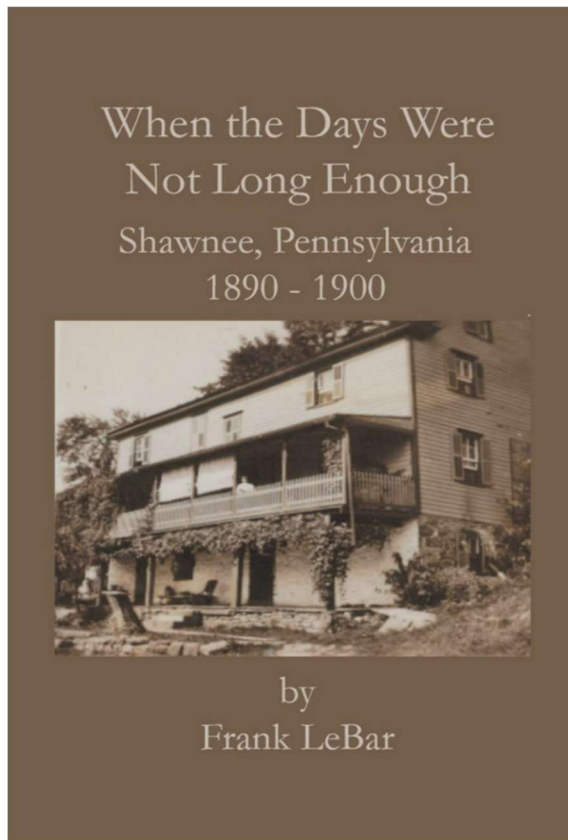


The Buckwood Inn built in 1911, later renamed the Shawnee Inn

c1893 – 1903

Hiram Labar inherited the store from his father as well as the Labar family home and farm. Various family members helped with running the store.

Hiram's son Frank produced the best history ever written about Shawnee. It is from Frank's perspective as a boy and contains much about the store. The book is still available thru Amazon:

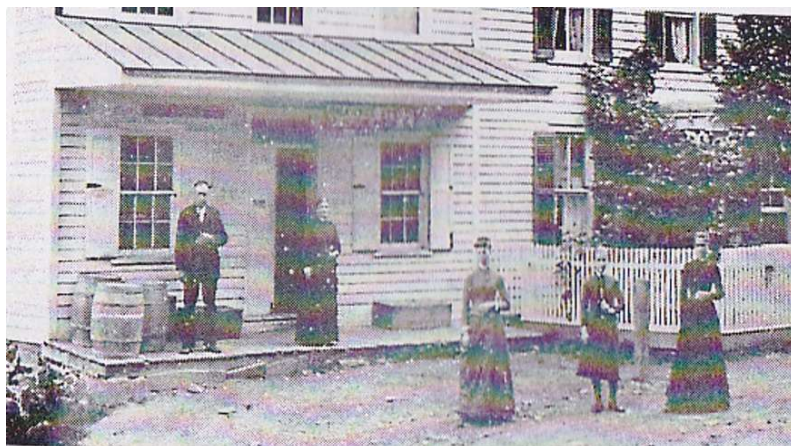


Hiram Labar

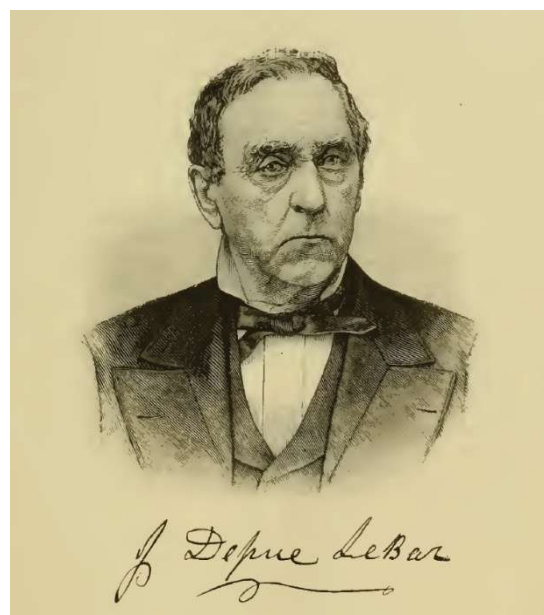
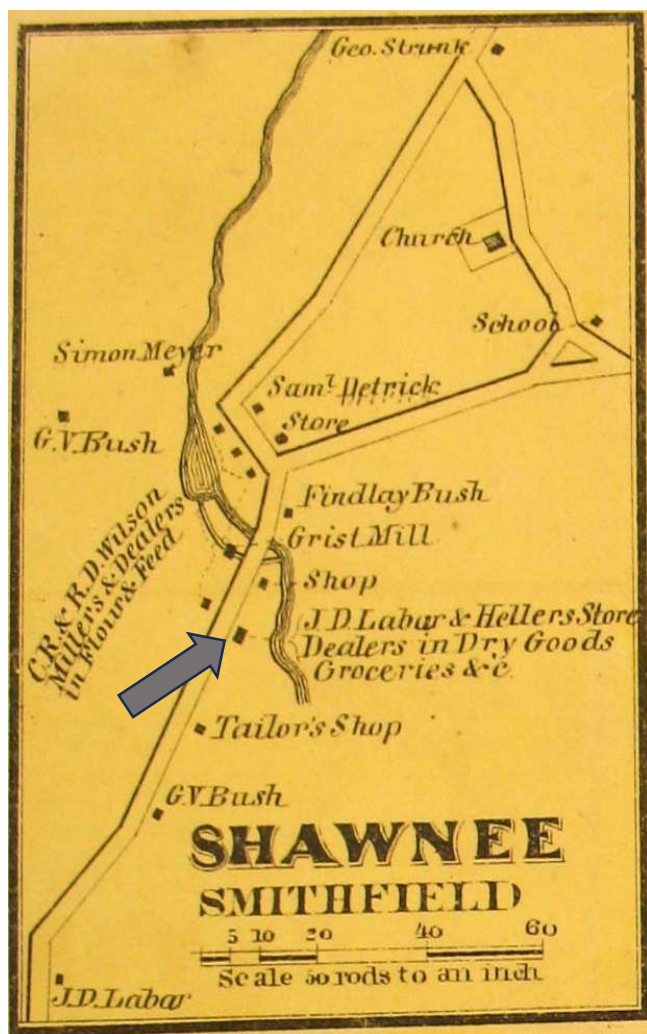
Although in disrepair, the Labar house pictured on the book cover still stands. It backs upon River Road near the bottom of the hill

1859 – 1893

Judge John DePue Labar and his son-in-law George Heller built the store in 1859.



Cover Photo (1888) Left to right: J.D. LaBar, wife Sarah LeBar, Maggie Hill, her daughter Anna Hill Jeffries, Lizzie LeBar Schoonover (J.D. and Sarah's daughter).



This map from 1860 refers to
The store as J.D. Labar & Hellers

SHAWNEE STORES BEFORE THE PRESENT BUILDING

c1850 - c1881 Detrick's Store

The 1860 yellow map above shows a store just above the main intersection in Shawnee. The site is now mostly paved as the intersection has been greatly enlarged. No pictures have been found. Samuel Dietrich built the store-house. Heller & Walker placed in it a stock of goods. J. D. La Bar bought Walker's interest and with Heller established the existing General Store in 1859. Freece purchased the Detrick building, also in 1859, and operated a store for 22 years.

1840- c 1858 Wilson's Store

In 1840 Charles R. and Joseph V. Wilson bought the Shrawder-Sittig house(s) and operated a store in the stone building, which had been closed for years. Stokes & Dreher managed it for the last 2 years before closing. The Wilsons were major landowners in Shawnee and also refitted the Shawnee Grist Mill across the street from the General Store. (no relation to Al and Dixie Wilson)

1797 – 1820 Coolbaugh and Shrawder store

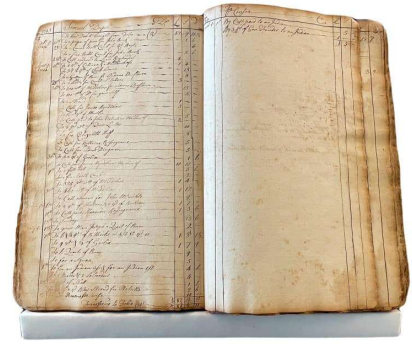
In 1797 John Coolbaugh and Philip Shrawder opened a store in Shawnee, but the original location has been lost. In 1810 Shrawder built a stone building for the store, and his frame dwelling house just a few feet away. The merchantile store continued until Shrawder's death in 1820. The dwelling and store buildings were connected in 1943 by the Sittig family.



This drone picture includes the 3 known locations of stores in the village.

1743 – 1783 Aaron Depuy's Store

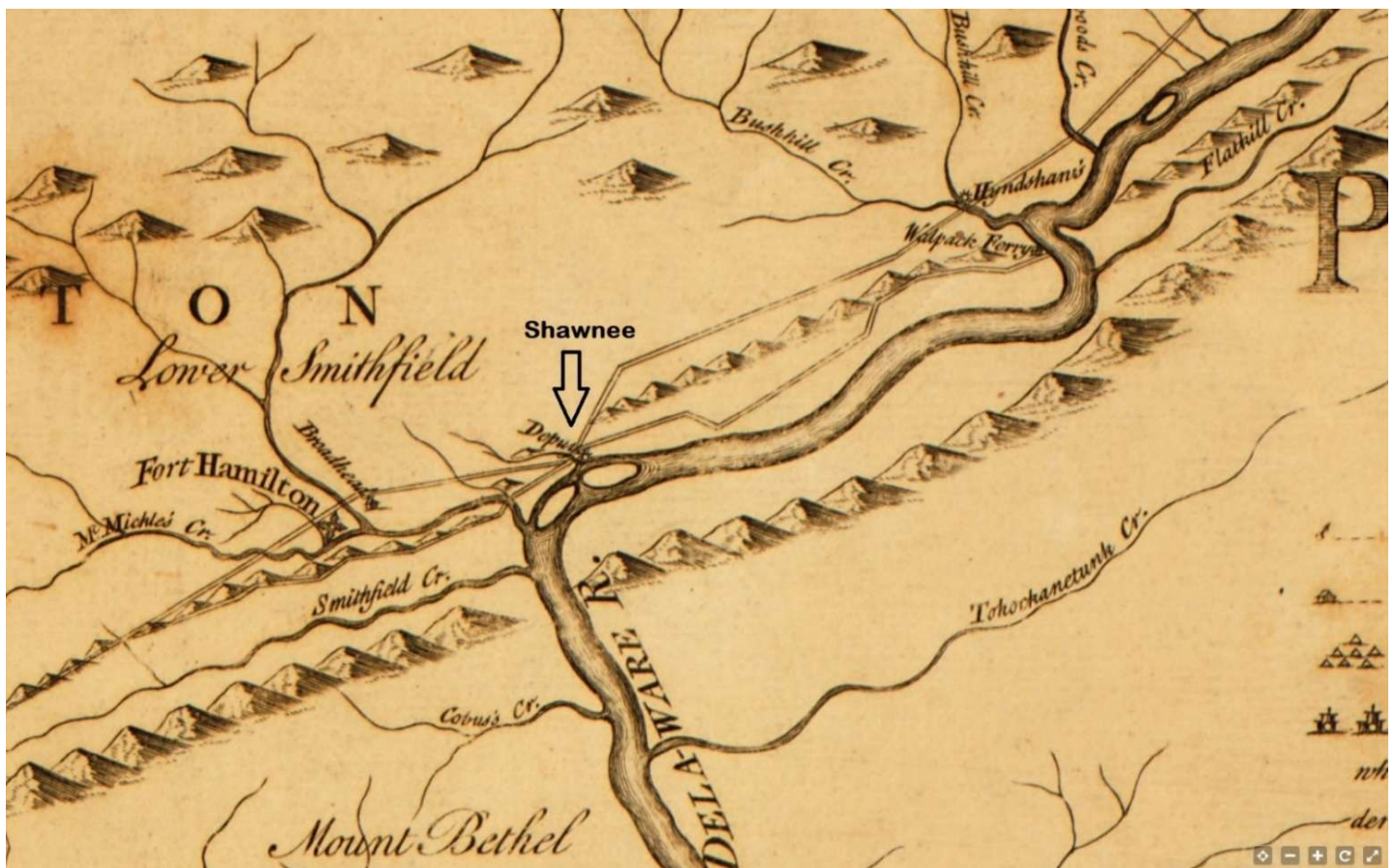
This was the first store in Shawnee. Aaron's father Nicholas DePuy was the first permanent settler in this part the state and arrived in 1727. The location of the store has been lost, but the store's ledger survives in the Monroe County Historical Association archives.



The store ledger sheds light on the early pioneering days in Northeast Pennsylvania. His earliest customers were mostly Dutch who migrated from around present Kingston, New York. He later established a second store in Oxford Furnace, New Jersey. Aaron's stone house in still stands in Delaware Water Gap, although it was once gutted by fire. It has been known as Smithfield Plantation, River Farm and Croasdale Manor.

Danny Younger assembled a wonderful analysis of this ledger and made it available online at:

<http://babybows.com/home.htm> He calls it "The Dupui General Store Ledger: 1743-1793" Included are many transcribed pages, mostly from the early years. Also there are many commentaries, articles, and links to early history of the region.



1759: Shawnee (then called Depuy's) was at the intersection of the only roads around, a perfect location for a store.

MISCELLANEOUS PICTURES & MAPS

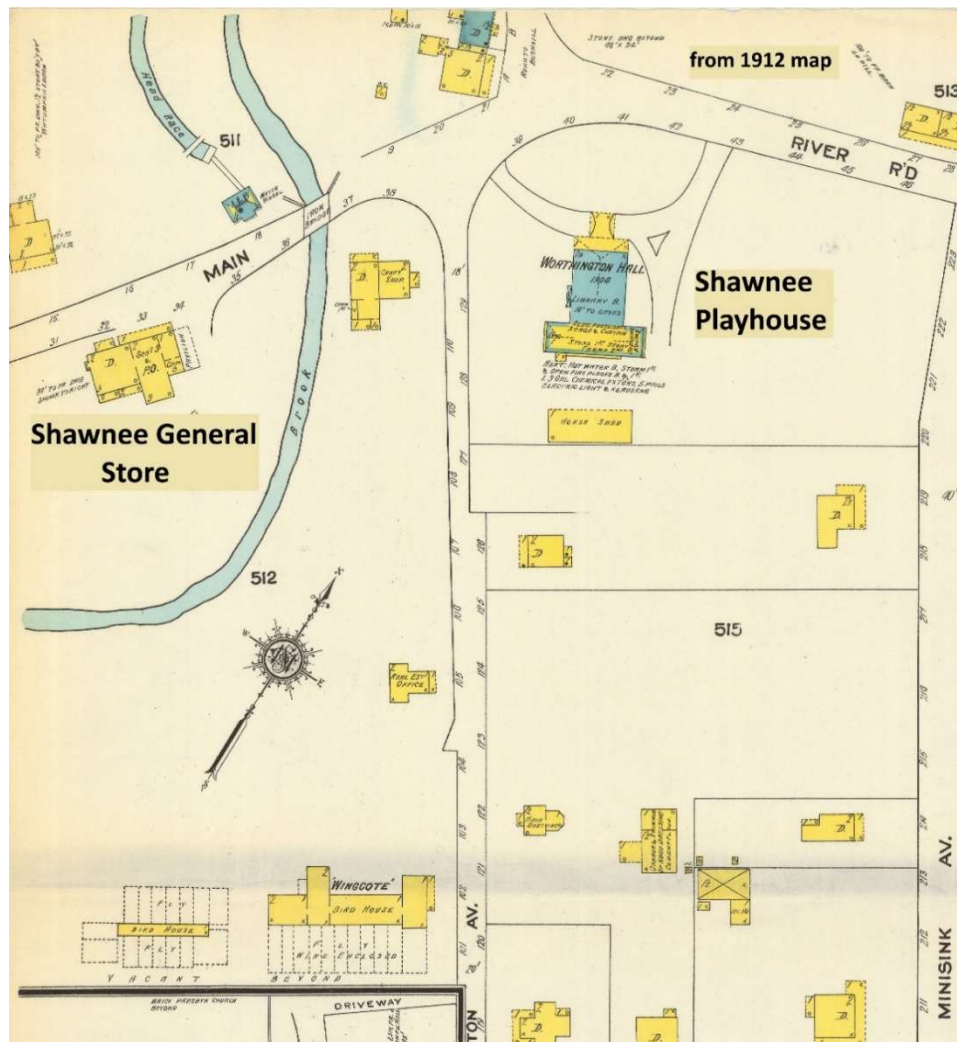


View from the front of the General Store during the Flood of 1955

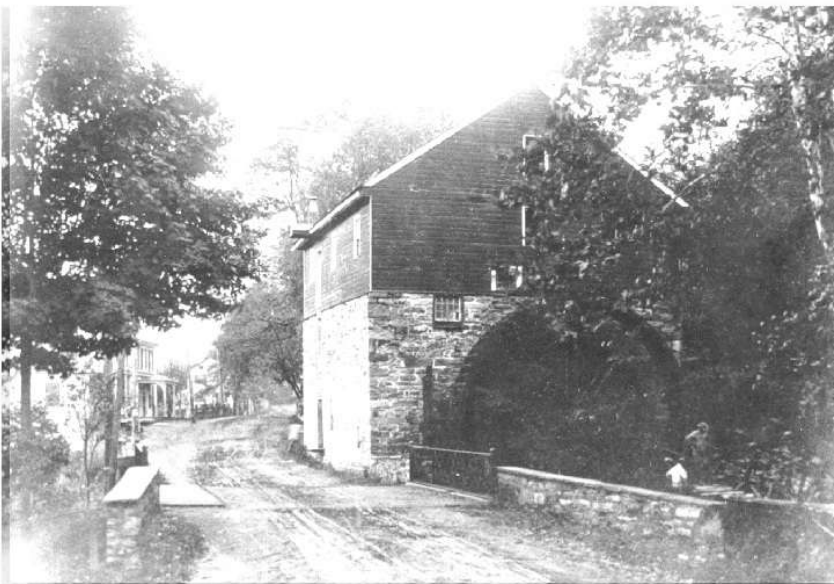


Recent 2024 or 2025

Sanborn Insurance
Map 1912



Shawnee Grist Mill circa 1901



General store in background of both pictures

Existing "Post Office" building

Note the iron railing above the dog for scale.

Grist mill was much larger and closer to the road.



Undated
postcard



Tourists on the
corner of River
and Hollow Roads

November 2, 2025

by neighbor Pete Sauvigne public domain

Additions, corrections, pictures, etc. are welcomed

Contact pete@pete7a.com

View or download latest version at: pete7a.com/store.pdf